

Supplementary Figures

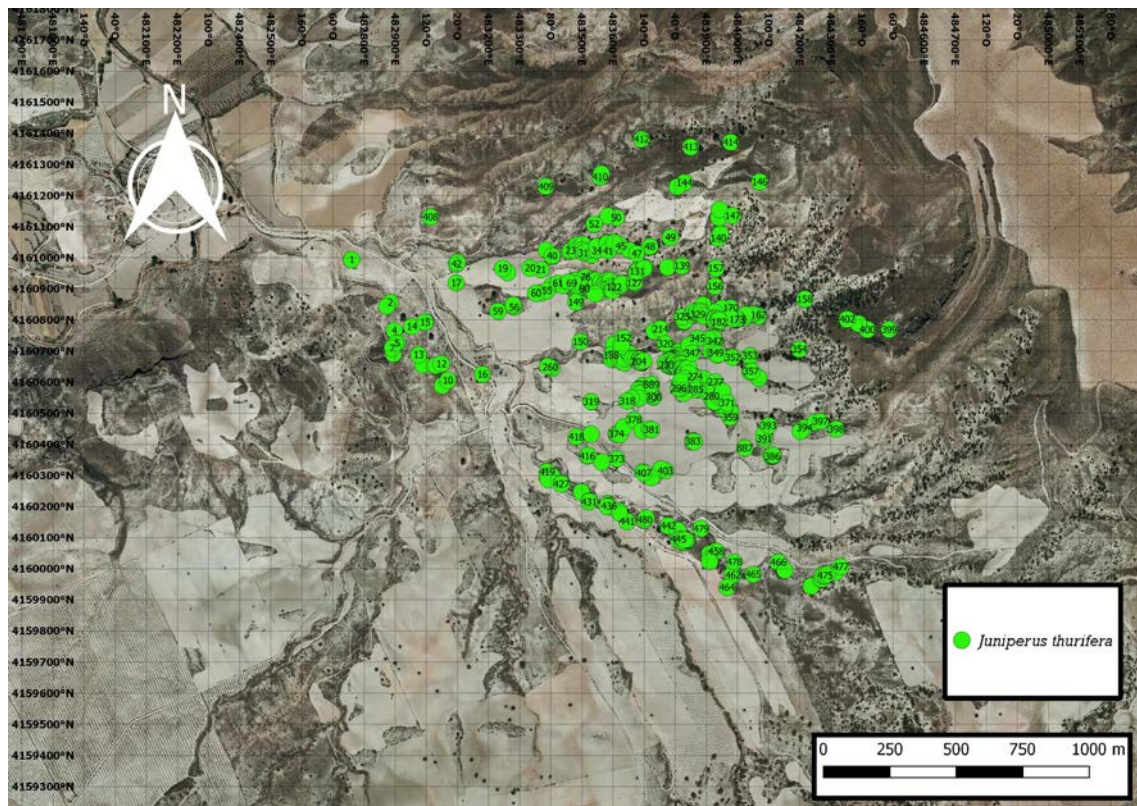


Figure S1. Selected subsample for sexual characterization and vegetative states.

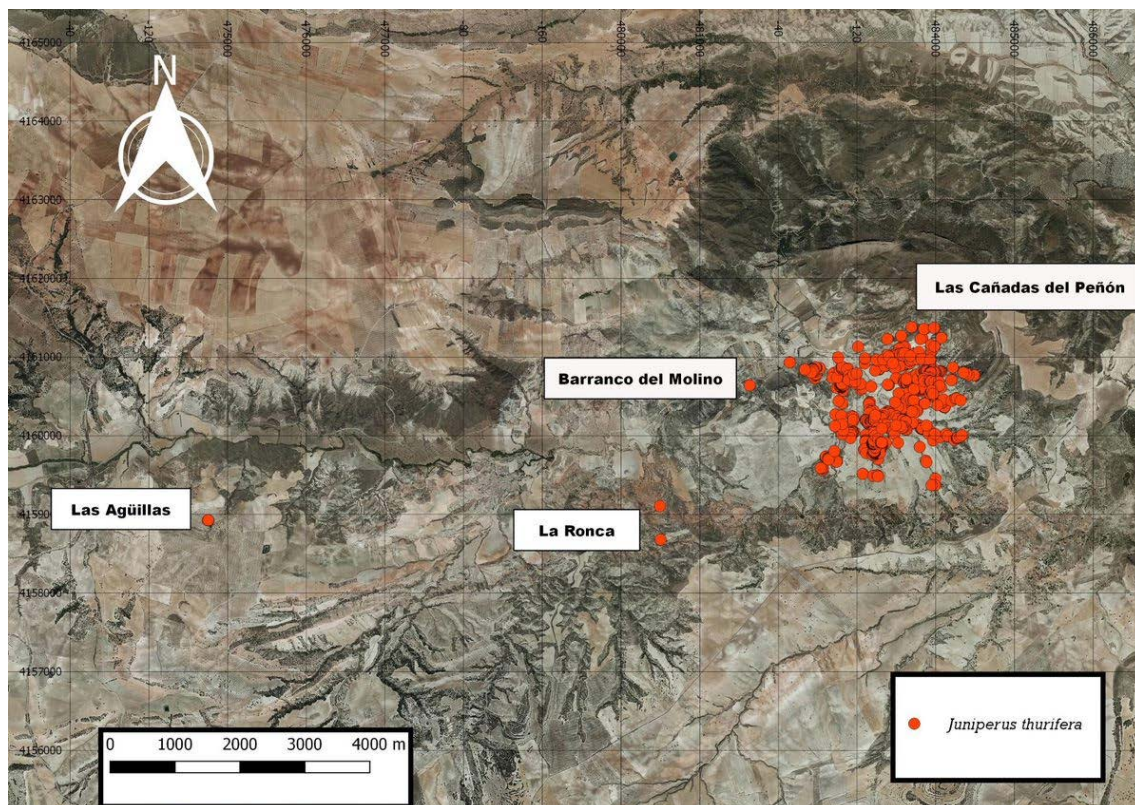


Figure S2. Total distribution of the 899 individuals sampled.

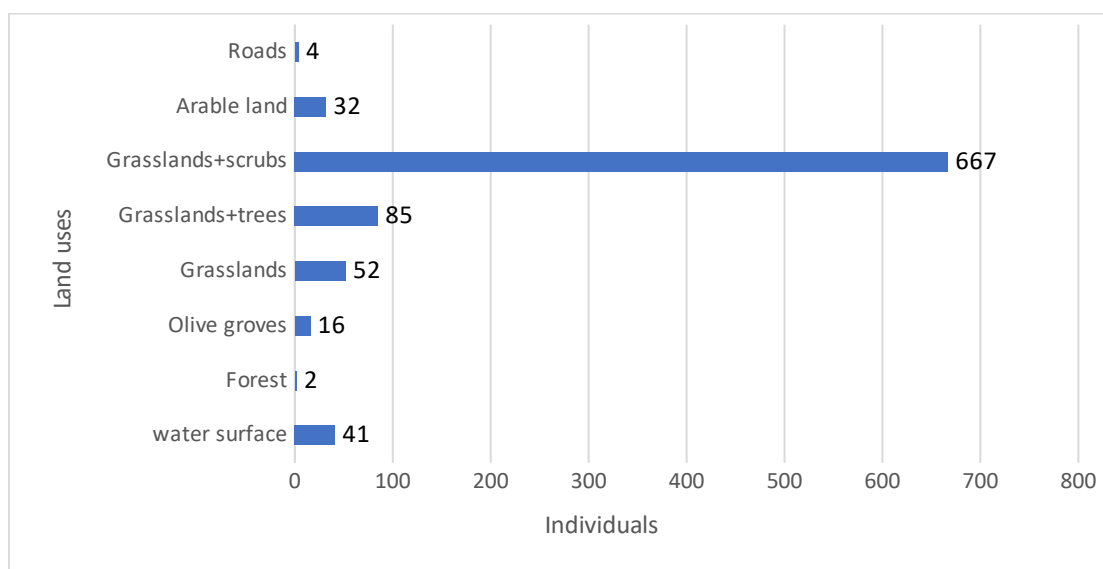


Figure S3. Land uses in which the individuals of Spanish juniper are found.

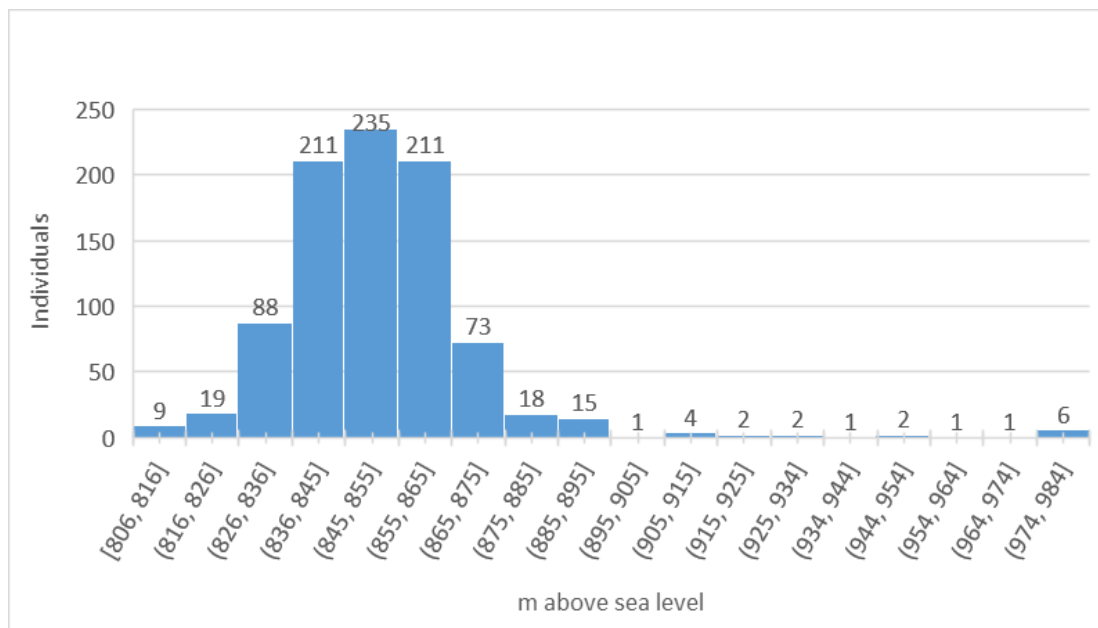


Figure S4. Distribution in altitude of the individuals of the total population of *Juniperus thurifera*.

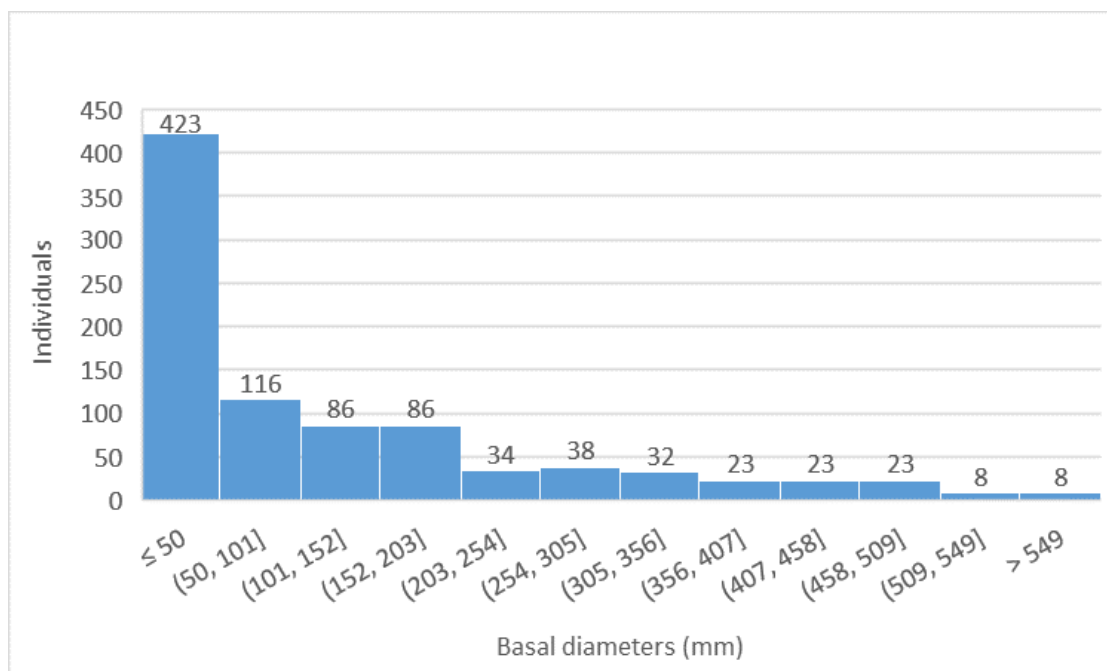


Figure S5. Distribution of the basal diameter of the individuals in the population.

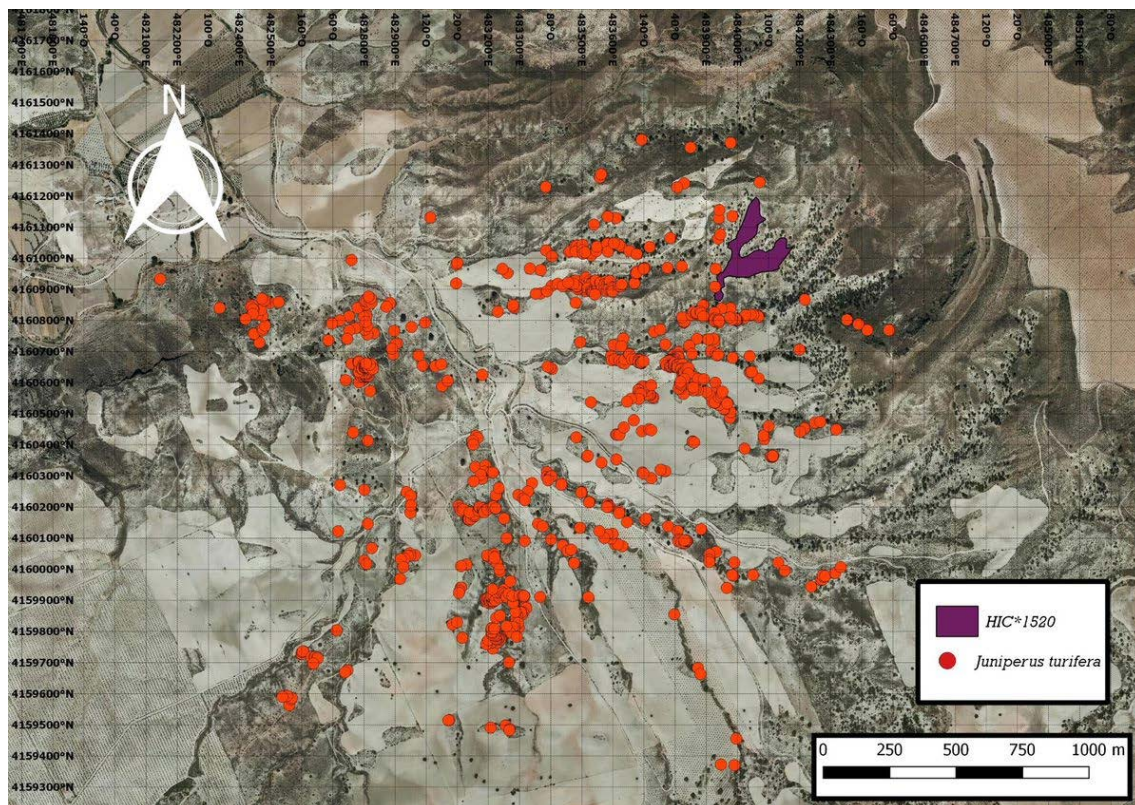


Figure S6. Priority habitats of community interest present in the area. HIC*=Habitats of EU Community Interest.



Figure S7. Erosive processes in sloping areas.